

Technical data sheet



Product features

Cooling cabinet 700 l GN 2/1, stainless steel, right door

Model	SAP Code	00014288
--------------	-----------------	----------



- GN / EN size in device: GN 2/1
- Minimum device temperature [°C]: -2
- Maximum device temperature [°C]: 8
- Insulation thickness [mm]: 60
- Control type: Digital
- Opening of device: Hinges on the right
- Automatic defrost: Yes

SAP Code	00014288	Energy class	D
Net Width [mm]	693	Number of internal parts	3
Net Depth [mm]	826	Number of GN / EN	3
Net Height [mm]	2008	GN / EN size in device	GN 2/1
Net Weight [kg]	110.00	Minimum device temperature [°C]	-2
Power electric [kW]	0.227	Maximum device temperature [°C]	8
Loading	230 V / 1N - 50 Hz	Refrigerant	R290

Technical data sheet



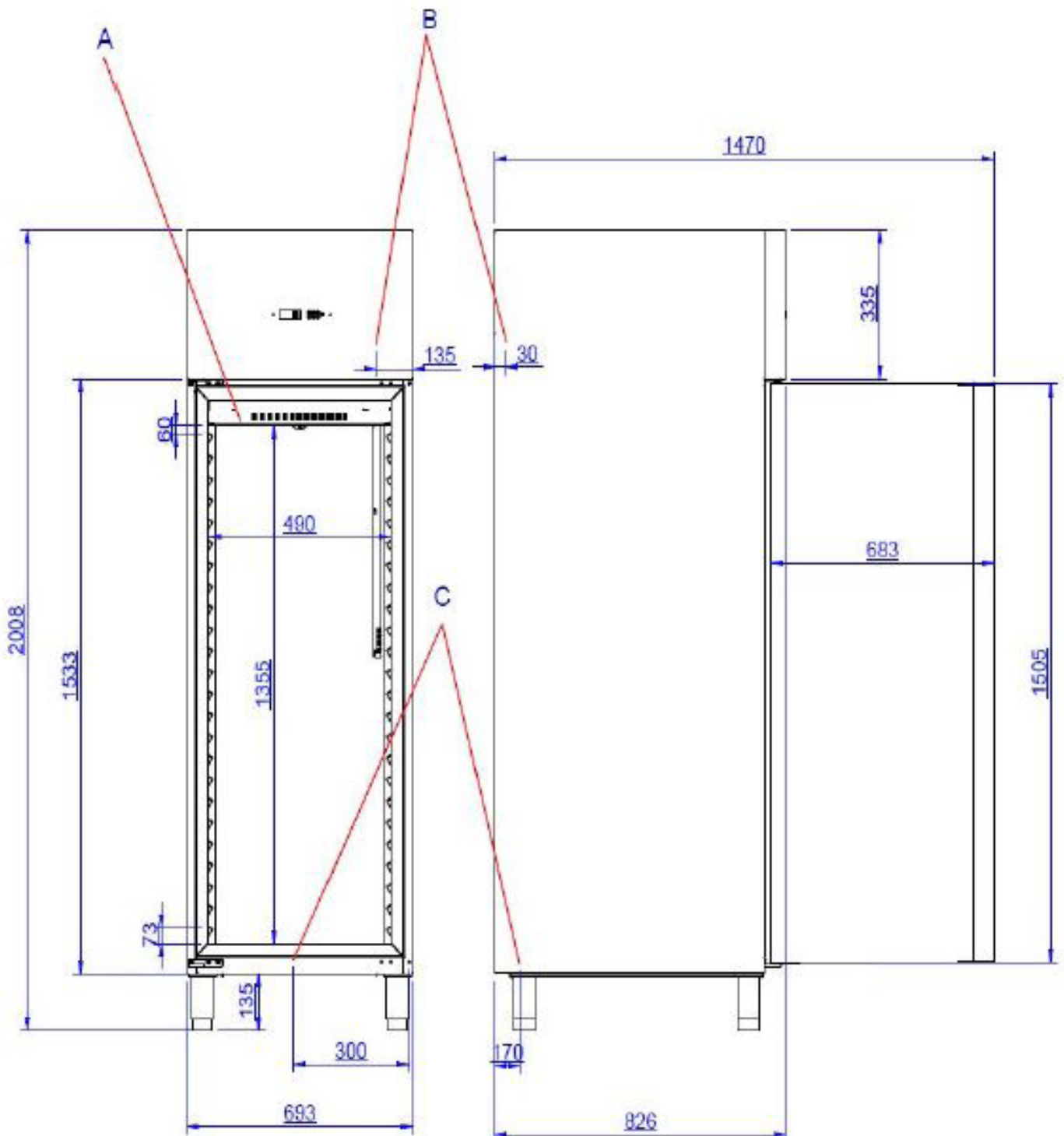
Technical drawing

Cooling cabinet 700 l GN 2/1, stainless steel, right door

Model

SAP Code

00014288



Technical data sheet



Technical parameters

Cooling cabinet 700 l GN 2/1, stainless steel, right door

Model

SAP Code

00014288

1. SAP Code:

00014288

2. Net Width [mm]:

693

3. Net Depth [mm]:

826

4. Net Height [mm]:

2008

5. Net Weight [kg]:

110.00

6. Gross Width [mm]:

700

7. Gross depth [mm]:

850

8. Gross Height [mm]:

2150

9. Gross Weight [kg]:

149.00

10. Device type:

Electric unit

11. Power electric [kW]:

0.227

12. Loading:

230 V / 1N - 50 Hz

13. Energy class:

D

14. Refrigerant:

R290

15. Cooling type:

Dinamic

16. Material:

Stainless steel

17. Min ambient temperature [°C]:

10

18. Max ambient temperature [°C]:

43

19. Device properties 2:

Cooling

20. GN / EN size in device:

GN 2/1

21. Number of internal parts:

3

22. Number of GN / EN:

3

23. Standard equipment for device:

3 plastic-coated grids GN 2/1

24. Adjustable feet:

Yes

25. Insulation thickness [mm]:

60

26. Opening of device:

Hinges on the right

27. Number of doors:

1

28. Unit:

Yes

Technical data sheet



Technical parameters

Cooling cabinet 700 l GN 2/1, stainless steel, right door

Model

SAP Code

00014288

29. Control type:

Digital

32. Automatic defrost:

Yes

30. Minimum device temperature [°C]:

-2

33. Thaving cycle:

Yes

31. Maximum device temperature [°C]:

8